



INNOVATIONS FOR LIVING®



# Woodmoor® & Woodcrest® Collection



Woodmoor® Chestnut™



Choose beauty...



ABOVE ALL ELSE

## Home sweet home.

It's the place where you want to feel the most comfortable. Safe. Protected. But no matter how much you love your house, it seems the work is never completely done. And if purchasing a new roof is on your to-do list, it may seem like a daunting task.

Above all else, your new roof should protect you and your family from the elements. It must deliver the performance that creates the peace of mind you deserve. Yes, it's a big decision.

But you don't have to worry about it anymore. We're here to help.

Owens Corning and your contractor can make this a positive experience—an opportunity, really. This is your chance to choose a roof that not only has outstanding performance, but also has exceptional beauty. One that can transform the look of your entire home. So for years to come, you'll feel great every time you pull in the driveway.

Safe. Protected. Home.







...enjoy performance too.







INNOVATIONS FOR LIVING™

## A brand built on trust.

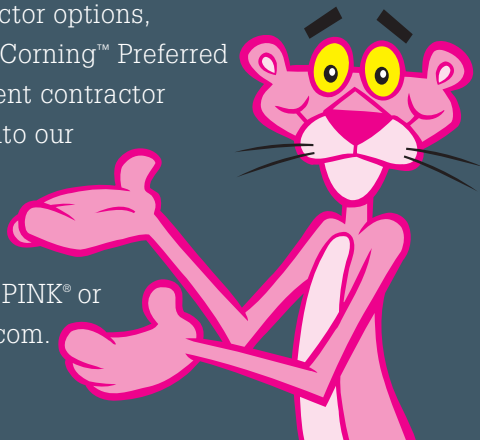
When it comes to an investment like a new roof, you of course want a good value for your money. You can feel confident about choosing our roofing products—Owens Corning has been a recognized leader in the building materials industry for over 65 years. We're known for making homes more comfortable, beautiful and durable. And it's likely you've invited our mascot, The Pink Panther,™ into your home already—our building products and famous PINK Insulation have been used in millions of homes across the country.



## A job well done.

Part of the peace of mind that comes with a new roof is the knowledge that it was installed properly. So it's smart to hire a professional roofing contractor who offers proven experience and a written estimate. It's a good idea to shop around—see what a few different contractors have to offer in terms of their experience and referrals, as well as in their approach to installation and pricing.

As you weigh your contractor options, consider using an Owens Corning™ Preferred Contractor—an independent contractor who has been accepted into our network because they meet our strict program criteria. For names in your area, call 1-800-GET-PINK® or visit [www.owenscorning.com](http://www.owenscorning.com).

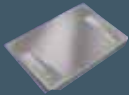


PEACE OF MIND

MAXIMUM DURABILITY

## The essentials for a healthy roofing system.

It takes more than just shingles to create a high-performance roof. It requires a system of products working together. Owens Corning™ Roofing Essentials™ Accessory Products work with our shingles to make up a roofing system that helps provide maximum durability for your roof. And the most protection for your home.

- a** **VentSure® Ventilation Products.** Help protect a roof from premature failure by helping remove heat and moisture from the attic. 
- b** **PINK™ Fiberglas™ Blown-In Insulation.** Tiny air pockets trapped in the insulation resist the passage of heat flow.
- c** **Owens Corning™ Hip & Ridge Shingles.** Help protect the ridge vent and add an attractive, finished look to a roof's hips and ridges.
- d** **Owens Corning™ Shingles.** Add durable beauty to a home. Shingles are the first line of defense against the elements.
- e** **Owens Corning™ Underlayment Products.** Add an extra layer of protection between the shingles and the roof deck to help prevent damage from wind-driven rain.
- f** **WeatherLock® Self-Sealing Ice & Water Barrier Products.** Help guard vulnerable areas where water can do the most damage to a roof: eaves, valleys, dormers and skylights.
- g** **WoodStart® Starter Shingles.** The first step in the proper installation of shingles.
- h** **RapidFlow® Gutter Drainage Protection.** Keeps leaves and other debris from clogging gutters, while allowing water to flow freely off of the roof and through gutters.
- i** **Owens Corning™ Undereave Ventilation Products.** Help prevent moisture buildup in the attic by working with ridge vents to keep air moving.





e

Owens Corning  
Ice & Water Barrier

f

Owens Corning  
Ice & Water Barrier

Owens Corning  
Ice & Water Barrier

g

h

i

a

d

c

b



**Roofing**

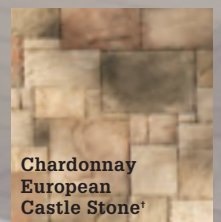
Choose a shingle with granules that play up the accent colors on your exterior. Also consider how the shingles' shadowing can add dimension to your roof.



**Woodcrest® Chestnut'**

**Cultured Stone® Veneer**

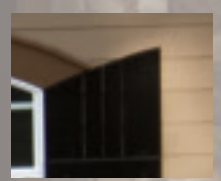
The colors and textures of the brick or stone on your home's exterior can also influence your shingle choice. Balance these strong accents with the color and dimension of your shingles.



**Chardonnay European Castle Stone'**

**Trim & Siding**

For a striking look, consider a shingle with coloring similar to the boldest exterior trim colors on your home.





## Design a look you'll love.

This is going to be a beautiful decision. Shopping for new shingles is the perfect opportunity to increase the curb appeal of your entire home. Your roof can make up more than half of your home's exterior, so it should complement your home's style and exterior color scheme.

As you browse your shingle choices, think about how the look of your new roof could improve upon the roof you have now.

- **Should you choose a different color?** Consider the look of your home's exterior. A new shingle color could bring your look together. Or even inspire a new palette.
- **Have you seen the granules?** Owens Corning™ shingles get their rich color from a combination of colored granules. Using the colors of these granules, you can coordinate all of your home's exterior elements—the paint, siding, brick or stone.
- **Do you need more dimension?** If your home's exterior is monochromatic, think about adding shingles that appear thicker and give your roof a rich, textured look. For homes that already have a detailed exterior, you could choose softer, more muted shingles. Owens Corning™ offers a variety of roofing shingles that carry a unique combination of these characteristics.

## Seeing is believing.

What if? Explore the possibilities of potential new looks for your entire exterior using the power of our Design EyeQ™ Visualization Experience. See how different shingles, siding—even Cultured Stone® manufactured stone veneer—could look on your own home.

To experiment for yourself, visit [www.ocdesigneyeq.com](http://www.ocdesigneyeq.com).









## Woodmoor® Shingles

Steadfast Woodmoor® shingles feature an extra-thick, three-dimensional appearance that evokes the look of wood shake. *Woodmoor* shingles also boast great endurance—they come with a Limited Lifetime Warranty; 110-MPH Wind Resistance Limited Warranty\* and Algae Resistance Limited Warranty\*. Also, our color-matched Owens Corning™ Hip & Ridge shingles will give your roof a beautiful, refined look.

### Beauty that endures

Enjoy the allure of wood shakes for years to come. *Woodmoor* shingles meet the highest fire resistance standards in the industry. They're also available in eye-catching colors you can't get from real wood. *Woodmoor* shingles take a classic look to new heights. See for yourself below.



**Before**



**Woodmoor® Juniper†**

**After**

WOODMOOR® SHINGLES



Woodmoor® Juniper†

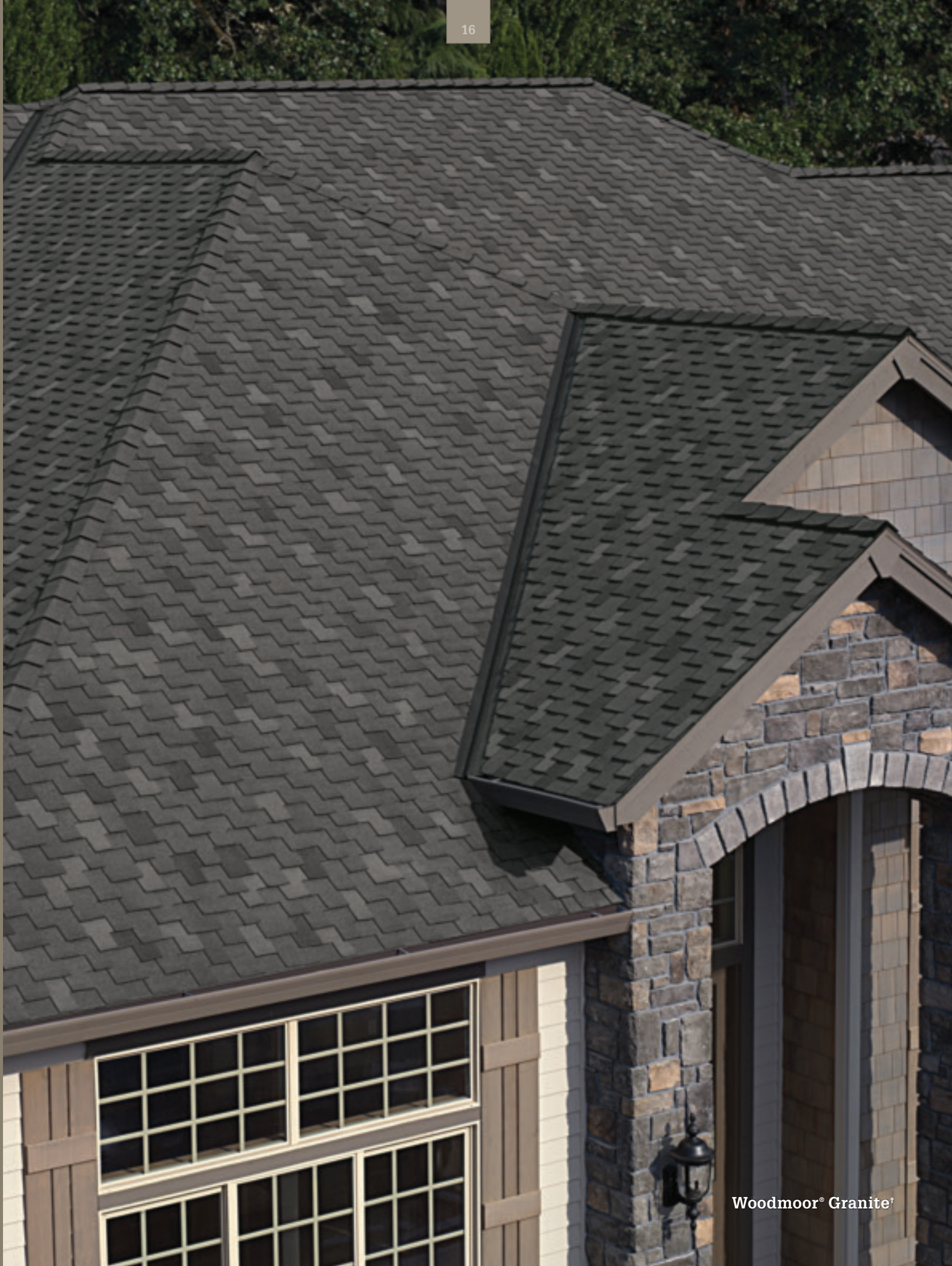
















Woodcrest® Carbon†



## Woodcrest® Shingles

Thick, ruggedly beautiful Woodcrest® shingles use their rustic and textured appearance to create the look of wood shake. Their natural look comes with a durability that's just as appealing—these shingles are backed by a Limited Lifetime Warranty,\* 90-MPH Wind Resistance Limited Warranty\* and Algae Resistance Limited Warranty\*. Plus, our color-matched Owens Corning™ Hip & Ridge shingles add architectural interest to your home.

### The look that lasts

The beauty of wood shakes without the wear.

*Woodcrest* shingles meet the highest fire resistance standards in the industry. They also infuse roofs with a pop of color you can't get from real wood.

*Woodcrest* shingles give a new twist to an old shake. Take a look below.



**Before**



**Woodcrest® Autumn Maple\***

**After**

WOODCREST® SHINGLES



Woodcrest® Autumn Maple†











Woodmoor® & Woodcrest® Collection



Carbon'



Granite'



Mesquite'



Timber'



Chestnut'



Sycamore'



Autumn Maple'



Juniper'







Woodmoor® Timber†



## Product Attributes

### Warranty Length<sup>\*</sup>

Limited Lifetime—Woodmoor<sup>®</sup>

Limited Lifetime—Woodcrest<sup>®</sup>

### Wind Resistance Limited Warranty<sup>\*</sup>

110 MPH—Woodmoor<sup>®</sup>

90 MPH—Woodcrest<sup>®</sup>

### Algae Resistance Limited Warranty<sup>\*</sup>

10 Years—Woodmoor<sup>®</sup>

10 Years—Woodcrest<sup>®</sup>

### Tru PROtection<sup>®</sup> Non-Prorated Limited Warranty<sup>\*</sup> Period

10 Years—Woodmoor<sup>®</sup>

10 Years—Woodcrest<sup>®</sup>

## Woodmoor<sup>®</sup> & Woodcrest<sup>®</sup> Collection Shingles Product Specifications

	Woodmoor <sup>®</sup>	Woodcrest <sup>®</sup>
Nominal Size	14 1/4" x 40"	14 1/4" x 40"
Nominal Weight	465 lbs.	350 lbs.
Exposure	4"	4"
Shingles per Bundle	15	15
Bundles per Square	6	6
Coverage per Square	100 sq. ft.	100 sq. ft.

## WoodStart<sup>®</sup> Starter Shingles Product Specifications

Nominal Size	40" x 13 3/8"
Pieces per Bundle	16
Lineal Feet per Bundle	53.33

## Applicable Standards and Codes

ICC ESR 1372	ASTM D 7158, Class H Wind
ASTM D 3462	ASTM D 3018, Type 1
ASTM E 108, Class A Fire	UL 790, Class A
ASTM D 3161, Class F Wind	CSA 123.5

In the coastal regions of California, which tend to have high levels of salt in the atmosphere, copper or non-metallic gutters such as vinyl are recommended for use with algae resistant (AR) shingles. Aluminum gutters or aluminum components without corrosion protection are not recommended. This is because rain or dew runoff from AR shingles (which contain trace amounts of copper) can cause gutter or flashing corrosion.

\* See actual warranty for complete details, limitations and requirements.

† Owens Corning strives to accurately reproduce photographs of shingles. Due to manufacturing variances, the limitations of the printing process and the variations in natural lighting, actual shingle colors and granule blends may vary from the photo. The pitch of your roof can also impact how a shingle looks on your home. We suggest that you view a roofing display or several shingles to get a better idea of the actual color. To accurately judge your shingle and color choice, we recommend that you view it on an actual roof with a pitch similar to your own roof prior to making your final selection. Color availability subject to change without notice. Ask your professional roofing contractor for samples of colors available in your area. The Cultured Stone<sup>®</sup> product colors you see are as accurate as current photography and printing techniques allow. We suggest you look at product samples before you select colors.



Want to know more about Owens Corning™ products or find an Owens Corning Preferred Contractor in your area? It's easy to reach us:

**1-800-GET-PINK® | [www.roofing.owenscorning.com](http://www.roofing.owenscorning.com)**



INNOVATIONS FOR LIVING™

OWENS CORNING ROOFING AND ASPHALT, LLC  
ONE OWENS CORNING PARKWAY  
TOLEDO, OHIO, USA 43659

**1-800-GET-PINK®**  
[www.roofing.owenscorning.com](http://www.roofing.owenscorning.com)

Pub. No. 10002227-E. Printed in U.S.A. November 2010. THE PINK PANTHER™ & © 1964–2010 Metro-Goldwyn-Mayer Studios Inc. All Rights Reserved. The color PINK is a registered trademark of Owens Corning. © 2010 Owens Corning.



(Compton, Denver, Irving, Portland, Summit)

Preferred Contractors are independent contractors and are neither affiliates nor agents of Owens Corning.

Cultured Stone® is a registered trademark of Owens Corning.